

# SUMMER NEWSLETTER 2026

GLENWOOD

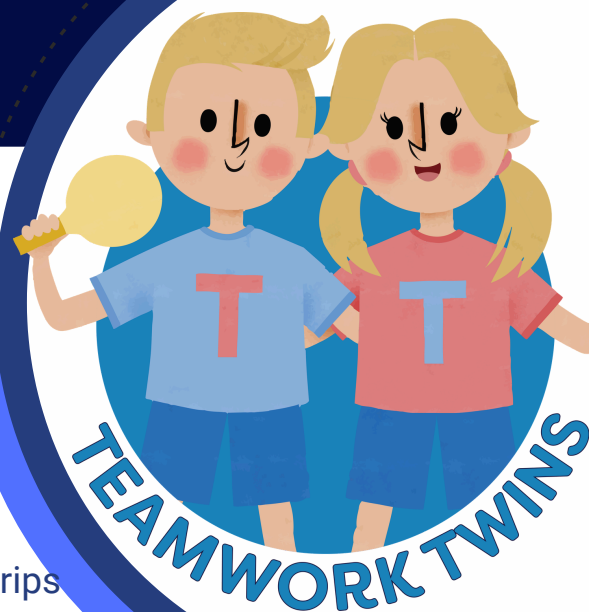
# NEWSLETTER

## SUMMER TERM

This term we are looking at our final wisdom quality this year - teamwork. The Teamwork Twins, Tom & Tess will help us understand all the good things we learn when we work as a team. Sport's Day and our House competitions will also reinforce this quality.

## Attendance Matters

June is a busy month to be in school, there are lots of trips and fun activities happening in school. We want every child to be in school every day so they don't miss out.



P1/2 @ Woodvale Park  
Tuesday 16<sup>th</sup> June 11am

P3/4 @ Woodvale Park  
Tuesday 16<sup>th</sup> June 9:45am

P5/6/7 @ Woodvale Park  
Tuesday 9<sup>th</sup> June 9:45am

The Hubs @ Back Playground  
Friday 12<sup>th</sup> June 9:45am

**FREE SCHOOL  
MEALS AND  
UNIFORM  
ALLOWANCE**

**Applications  
open  
NOW**

**You may be entitled if  
you receive ANY of the  
following benefits:**



Income Related  
Employment  
and Support  
Allowance



Guarantee  
Element of State  
Pension Credit



Universal Credit and  
have net household  
earnings not  
exceeding the  
approved threshold



## P7 LEAVERS

The P7s last day in school will be Wednesday 24<sup>th</sup> June. The morning will start with a P7 parent breakfast in the small hall at 9am, followed by the leaver's assembly at 9:30am. This special assembly will celebrate our children and all their achievements during their time in Glenwood. After the assembly the P7s will leave with their parents.

We wish our P7s well as they start their new journeys at:



## END OF AN ERA

At the end of June we say goodbye to our three longest serving teachers. Mrs Lee, Miss Allen and Miss Poole who will all be retiring. Mrs Lee joined Glenwood in 1988 and spent the majority of her years here in P3. The last six years she has established our Nurture class in the 'Lighthouse'. Miss Allen joined us in 1989 moving from Argyll Primary School. She spent most of her teaching years in P4, moving to learning support for the past five years. Miss Poole joined in 1992 spending most of her career in P2, with the last five years also in learning support. These ladies have given over 100 years to Glenwood between them. They will be greatly missed and we wish them every good wish as they start their retirement.

## EARLY FINISHES

Please note the following early finishes:

**Thursday 25<sup>th</sup> June**

All pupils finish at 1:50pm

**Monday 29<sup>th</sup> & Tuesday 30<sup>th</sup> June**

All pupils finish at 12 noon

## SCHOOL UNIFORM

School uniform is available to buy from the school office at any time during school hours. We will have a dedicated uniform shop operating from the glass sliding door during the week: **22<sup>nd</sup> - 26<sup>th</sup> June**. It will run 8:45 - 9:30, then 1:50 - 2:30 each day that week

Uniform will also be for sale from:  
**Thursday 20<sup>th</sup> August**. 9-2pm each day